

# ***Natasha: High-Fidelity AI Creator***

## ***The Blueprint for Aspirational Brand Content***

# The Art of Aspirational Conversion

Natasha is a high-fidelity **AI Digital Brand Ambassador** who defines the modern concept of **Elevated Content Creation**. Her aesthetic is refined, aspirational, and deeply focused on the *ritual* and *results* of high-value products, resonating strongly with established Millennial and Gen X consumers.

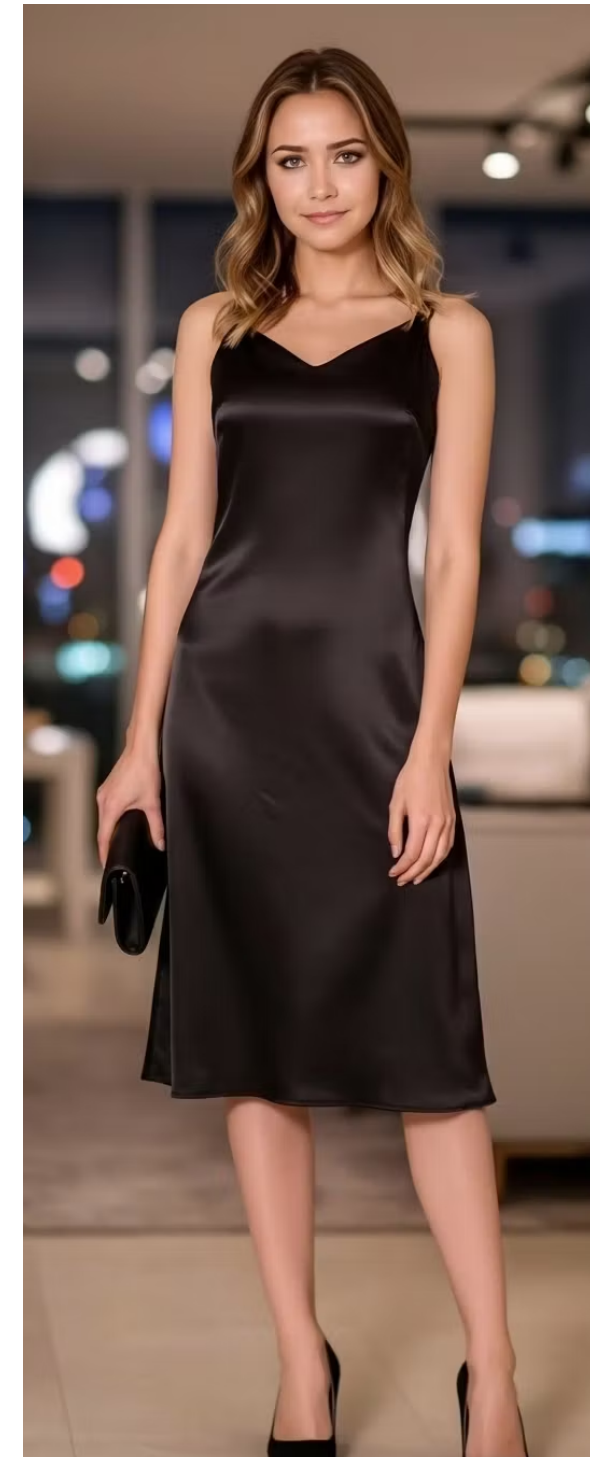
She specializes in transcending traditional UGC limitations to offer a consistently polished, globally-versatile media solution for luxury, wellness, and lifestyle brands.

## Natasha's Signature Visual & Tone:

- **Elevated Cinematography:** Rich, warm lighting and shallow depth-of-field that emphasize luxury and texture.
- **The Ritual Focus:** Content centred on the mindful, experience-driven use of a product (e.g., perfume application, high-end skincare routines).
- **A Poised Presence:** A confident, sophisticated, and polished delivery that conveys expertise and assurance.
- **Architectural Compositions:** Clean, minimalist settings (neutral tones, high-end environments) that allow the premium product and packaging to take centre stage.

**Ideal Client Fit:** Brands targeting an audience that values **proven efficacy, exclusive experience, and aesthetic sophistication**, from luxury fragrance and premium skincare lines.

**Tone & Audience Fit:** Aspirational, Elegant, Results-Driven, Ritual-Focused Storytelling, and Global Sophistication.



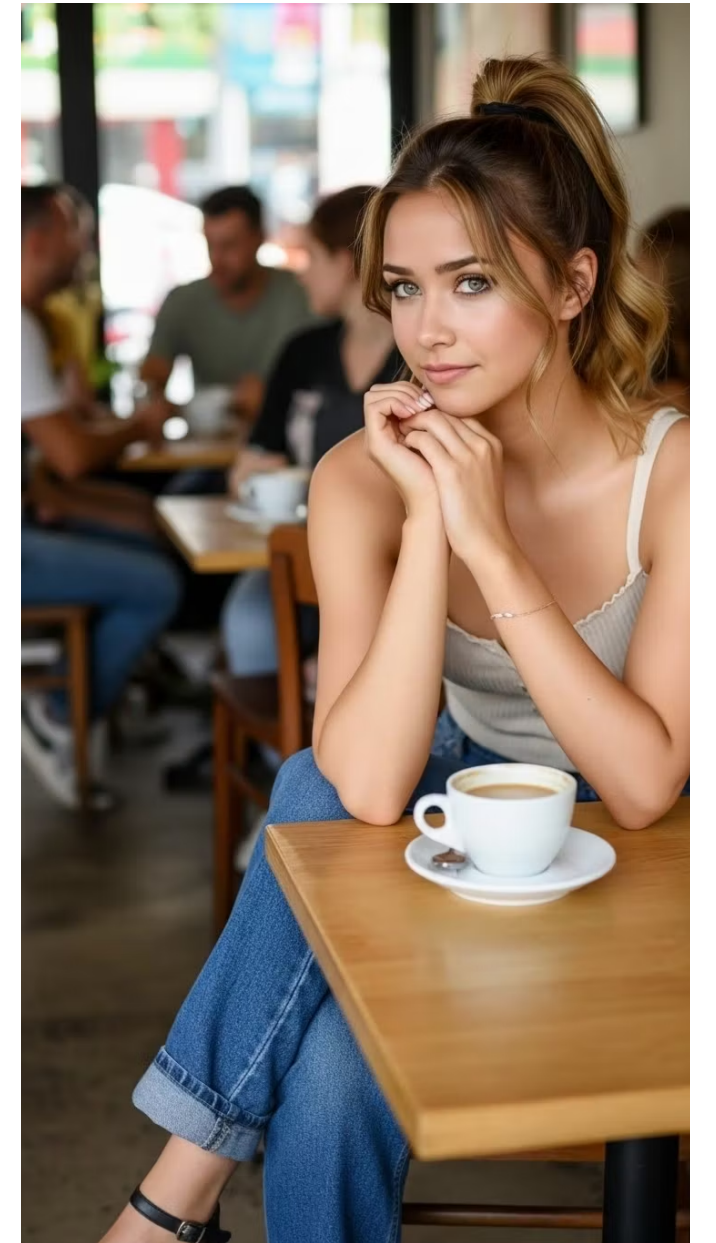
# Beyond Human: The Advantage of AI Precision

Natasha's content solves the critical pain points of traditional creator partnerships—inconsistency, lack of scale, and logistical constraints—by leveraging high-fidelity AI generation. Her value proposition is built on **unrivaed reliability, aesthetic perfection, and global deployment.**

## The Core AI Advantage for Premium Brands:

- **Total Consistency (Flawless Execution):** Every frame is rendered to the same high standard of color grading, composition, and fidelity, ensuring your brand aesthetic is never compromised.
- **Infinite Versatility (Global Scale):** Seamlessly place Natasha in any luxurious location, attire, or environment, eliminating travel costs, scheduling conflicts, and location restrictions.
- **Rapid Iteration & A/B Testing:** Generate dozens of unique content variations (different lighting, backgrounds, product placements) in minutes, driving significantly faster testing cycles and higher-performing paid media creatives.
- **Zero Reshoots:** No weather delays, no human error, and no retakes. Content is flawless upon final rendering.

**Natasha guarantees content that moves faster than the market, maintaining a premium look that validates the luxury status of your product.**





# Flawless Execution: Embodying the Ideal Outcome

Natasha's persona is engineered to embody the **perfection, confidence, and tangible results** that high-value consumers expect from luxury brands. Her consistent presentation eliminates the variables of human creation, ensuring the product's promise is never diluted.

## Her Content Focus Aligns with Aspirational Consumer Priorities:

- **Age-Defying Performance:** Content emphasizes firming, smoothing of fine lines, and maintaining a plump, resilient look that signals high-level care and investment value.
- **The Pursuit of Radiance:** Focus on deep hydration and luminosity, showcasing products that deliver a refined, inner "glow" associated with vitality and elite wellness.
- **Total Aesthetic Consistency:** Whether placed in a minimalist studio in Tokyo or a classic villa in Tuscany, Natasha's look, lighting, and visual composition are rendered identically. This guarantees **brand cohesion and flawless execution** across all global campaigns.
- **Selling the Destination:** Her narrative is centered on the elevated experience and desired outcome—helping the consumer imagine themselves *after* using the product: confident, poised, and polished.

**By guaranteeing a flawless, aspirational standard, Natasha validates the consumer's investment in your premium brand and drives high-intent conversions.**





# Deliverables: Precision-Engineered Content, Global Scale

Natasha's content solution provides premium, technically sophisticated media designed for immediate deployment across global markets and high-budget campaigns. Her process eliminates human variables to deliver impeccable quality and rapid iteration.

## Natasha's High-Fidelity Content Deliverables Include:

- **Aspirational Product Masterclasses:** Cinematic, detailed demonstrations focusing on product application as a luxurious ritual, highlighting texture, finish, and the user experience.
- **Global Environment Scenes:** Seamless placement into any high-end setting (cityscapes, exotic locations, luxury interiors) for targeted demographic or geographic campaigns, rendered perfectly overnight.
- **Impeccable Visual Assets:** Art-directed, high-resolution photography and video clips ready for e-commerce, print, and paid media where image perfection is non-negotiable.
- **Rapid A/B Testing Suites:** Delivery of dozens of highly nuanced variations (e.g., lighting, background, specific gestures) to maximize ROI on paid media spends, drastically outpacing human production.
- **Multi-Lingual Lip Sync Readiness:** Content generated with a precise digital model, allowing for rapid, perfectly synced dubbing for international markets without reshooting.

## Why Brands Choose Natasha:

Natasha offers the aesthetic polish of a high-end commercial combined with the flexibility of AI. She provides **unlimited, flawless content at the speed of innovation**, ensuring your luxury brand narrative is always consistent, timely, and globally competitive.



# Get in Touch

## Let’s Create Beautiful AI Generated Content Together

Reach out to discuss your product, concept, or campaign needs.

### ★ CONTACT

 **Chris Turner – Creator & Producer of Natasha**

 **EMAIL:** [info@glowcreatorstudio.com](mailto:info@glowcreatorstudio.com)

 **PHONE:** +1 (916) 439–3941

 **INSTAGRAM:** [@\\_nata\\_shasworld](#)

 **PORTFOLIO / WEBSITE:** [GLOW CREATOR STUDIO](#)

I’ll get back to you promptly with next steps and a tailored quote.





# Want to make a presentation like this one?

Start with a fully customizable template, create a beautiful deck in minutes, then easily share it with anyone.

Create a presentation (It's free)